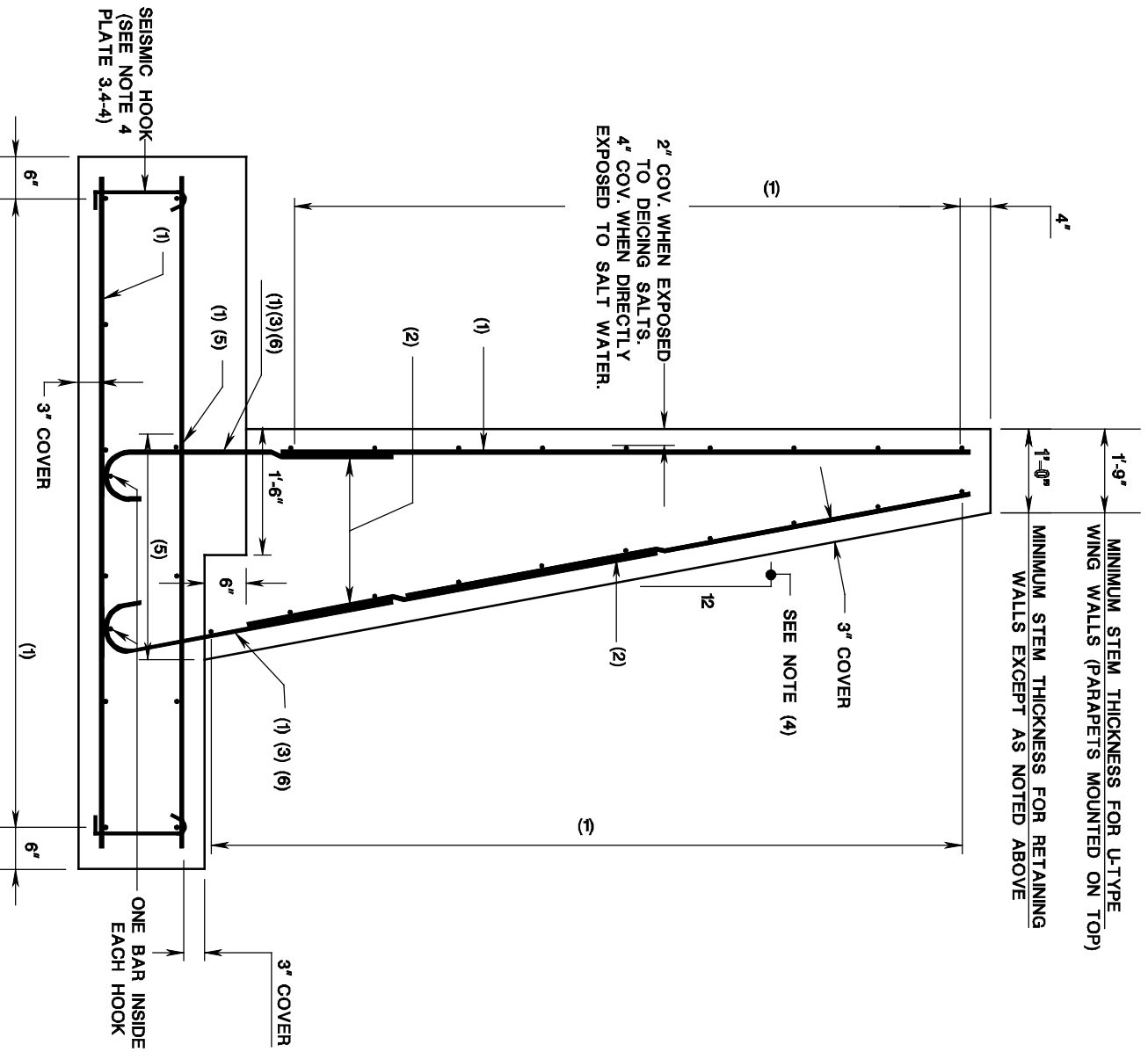


# RETAINING WALL SECTION

ISSUED: 2009

PLATE  
3.4-1



1. REINFORCEMENT NOT DESIGNATED SHALL BE AS REQUIRED BY DESIGN.
2. TENSION LAP SPLICE TO MEET AASHTO LRFD CLASS C SPLICE CRITERIA.
3. SEE PLATE 3.4-4 FOR ALTERNATE DOWEL DETAIL.
4. DESIGNER SHALL VERIFY THE NEED FOR BATTER FOR WALLS UNDER 10'-0". WALLS OVER 10'-0" SHALL HAVE A MINIMUM BATTER OF 12:1. THE HEIGHT OF THE WALL SHALL BE MEASURED FROM THE TOP OF THE HEEL OF THE FOOTING.
5. TRANSVERSE STEEL IN TOP OF FOOTING SHALL BE DEVELOPED IN TENSION.
6. CORROSION PROTECTED DOWELS IN CORROSIVE ENVIRONMENTS.